

## SB-Temp for Jeti Duplex

Thank you for Purchasing SB-temp

The Sb-temp is a 8 Channel Temperature Sensor.

It can handle a large range of K Type sensors .

The SB-temp is currently only made to work with Jeti driven Menu on all DS and DC series.

Its very easy to setup and you can use up to 5 devices (40 sensors) at the same time.

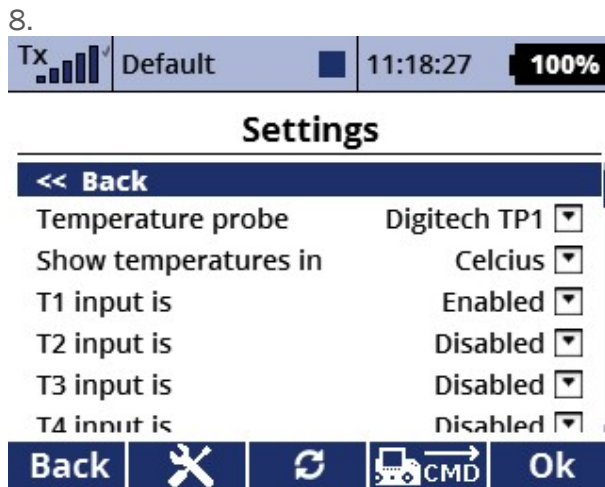
## Installing :

1. Connect the Receiver port to your Jeti Receiver
2. Make sure that port is set to Serial bus (EX).

3. It will then be seen in the Device Explorer menu.
4. Red LED will blink 2 x a second when connected and 1 x per second if not connected.
- 5.



- 6.
7. Connect the K type sensors tot he corensponding ports en enable them, if you have a port that has NO sensor connected please disable it otherwise you can get false readings!



9. Selecting Temp probe , make sure SB-temp Temp probe is set to TP1 its the only one enabled at the moment , more will be supported in the future.

At the Moment ALL K type sensors are supported , there is a large range sensors for sale on webshops.

Tx Default 11:19:02 **100%**

### Sensors/Logging Setup

SB-TEMP			
1	T1	°C	Yes
2	T2	°C	Yes
3	T3	°C	Yes
4	T4	°C	Yes
5	T5	°C	Yes

Auto | (9) | | Ok

Digitech Aerosports Netherlands.